

Pajaro Valley Community Water Dialogue



Presented by
Emily Paddock, Driscoll's
Lisa Lurie, RCD Santa Cruz County
Brian Lockwood, PVWMA

Overview

- Water in the Pajaro Valley (State of the Basin)
- Basin Management
- Community Water Dialogue Approach
- Dialogue to Action
- Lessons Learned and Future Projects

Pajaro Valley



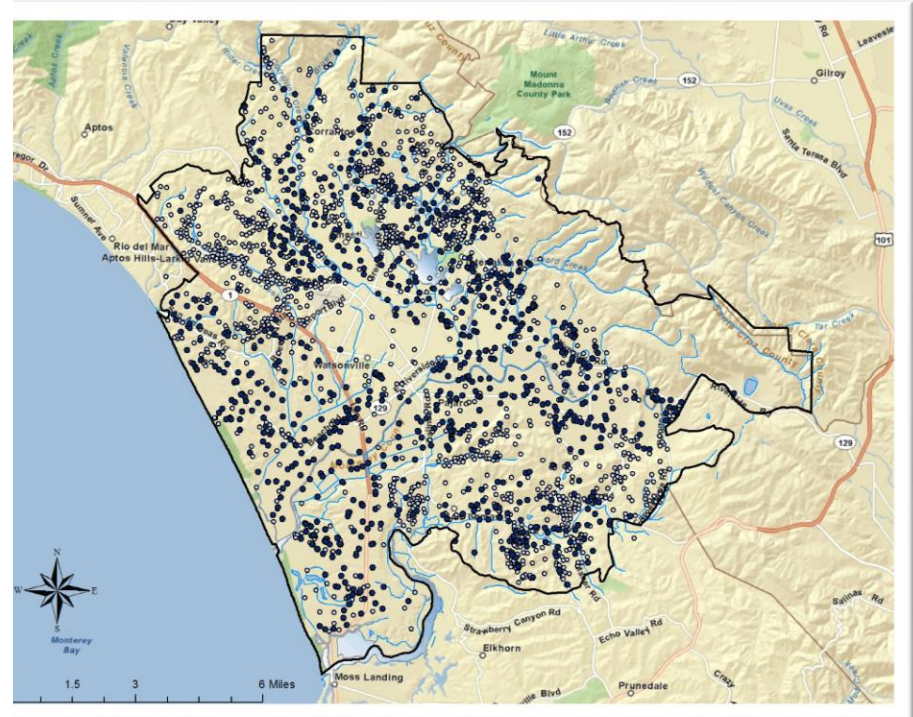
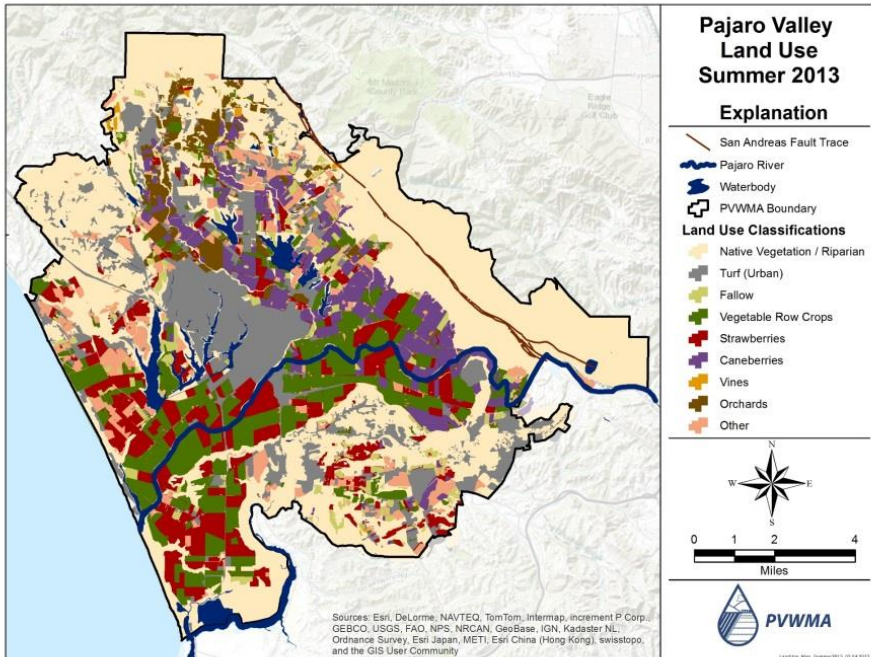
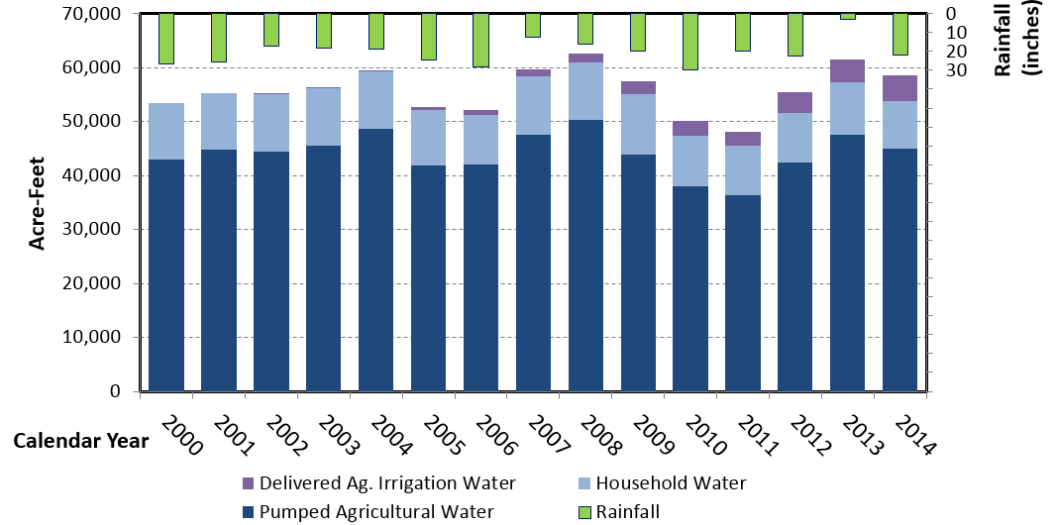
- **Average Valley-Wide Water Use**

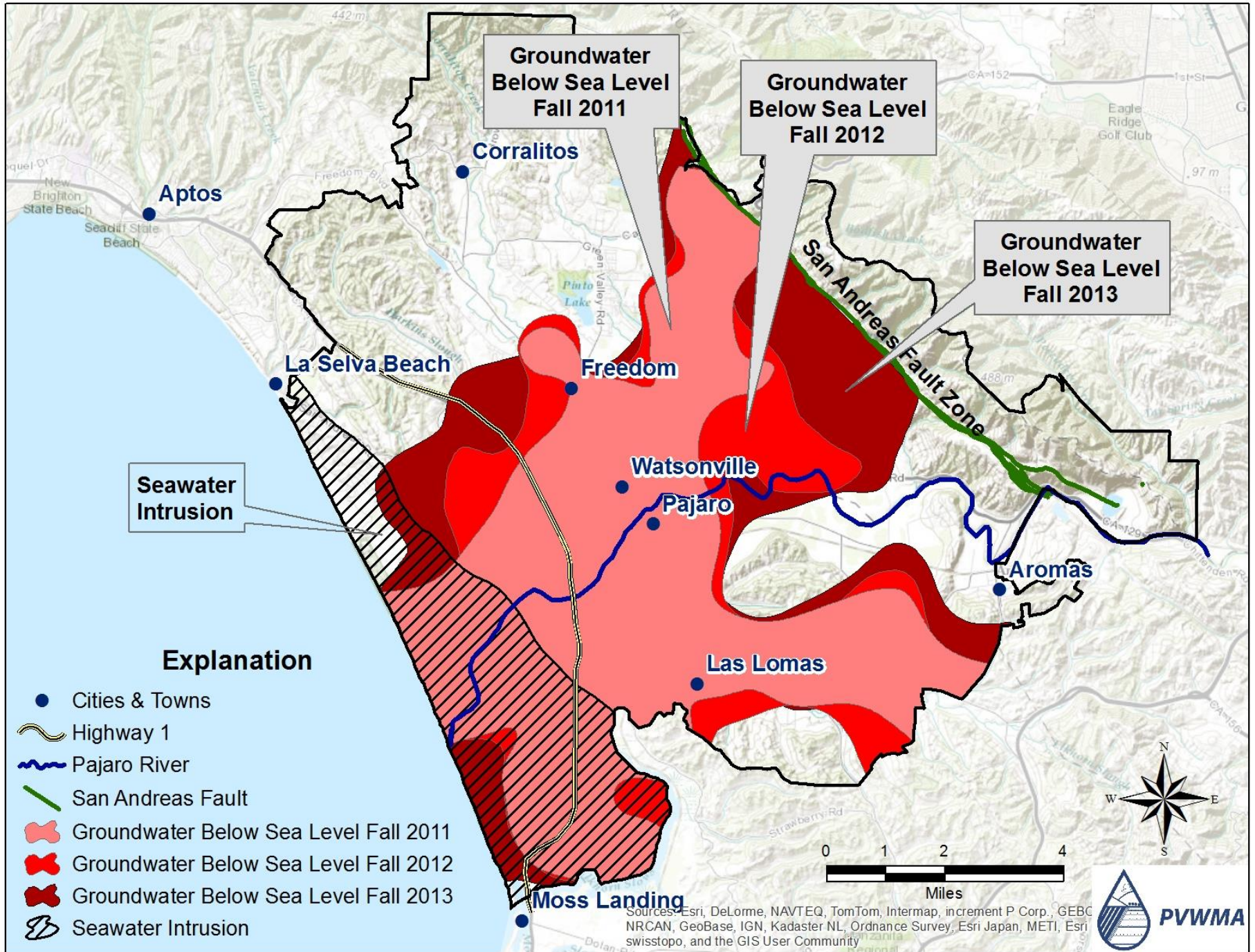
- 55,000 Acre-Feet per Year
- 850 Ag Wells
- 1,300 Rural Residential Wells

- **Agro-Economy**

- 28,000 Irrigated Acres
- 2013 Crop Value ~\$900,000,000

**Water Use and Precipitation Trends
Pajaro Valley 2000 - 2014**





Seawater Intrusion

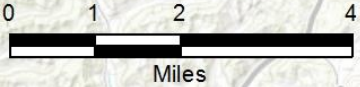
Groundwater Below Sea Level Fall 2011

Groundwater Below Sea Level Fall 2012

Groundwater Below Sea Level Fall 2013

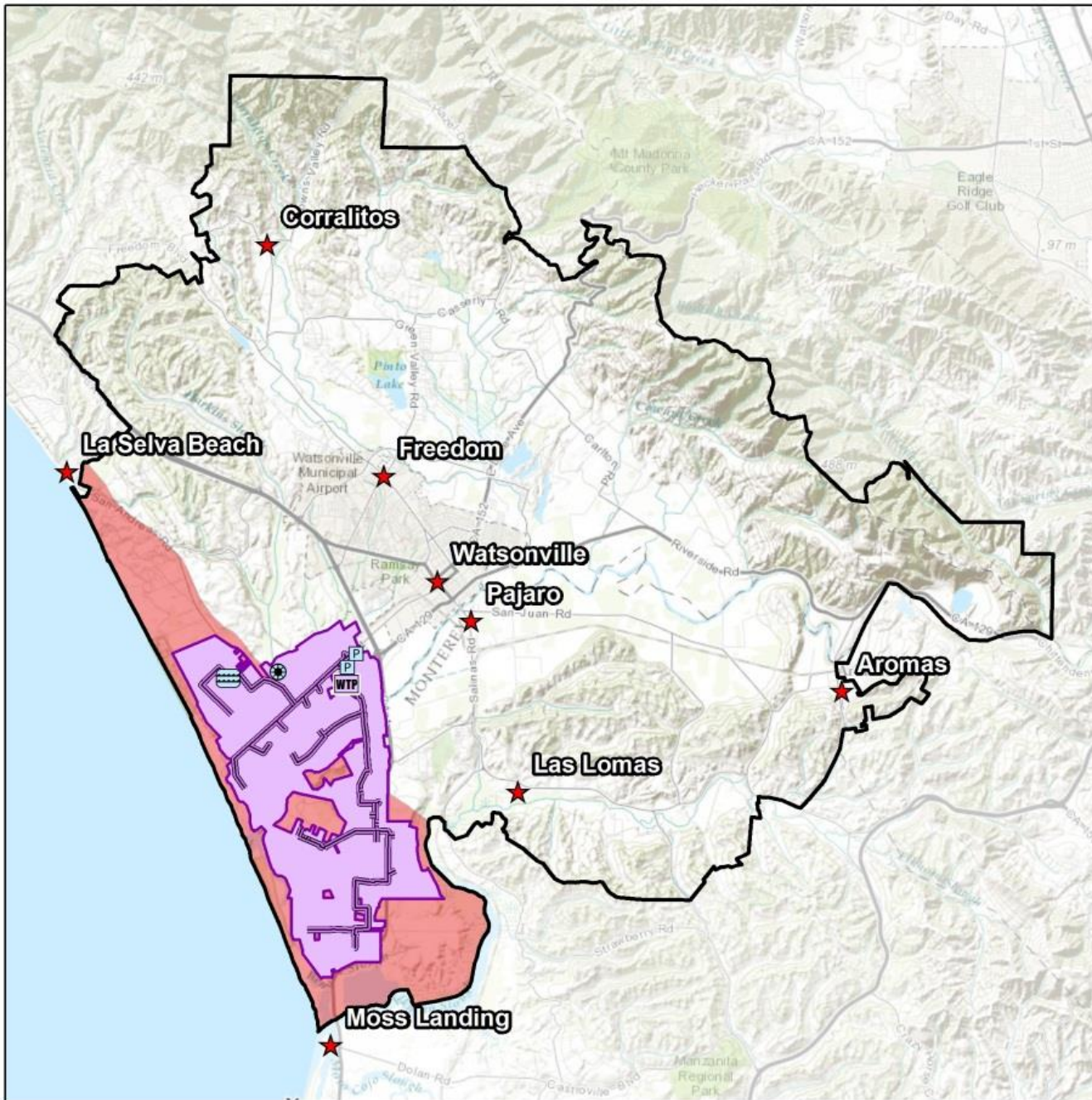
Explanation

- Cities & Towns
- Highway 1
- Pajaro River
- San Andreas Fault
- Groundwater Below Sea Level Fall 2011
- Groundwater Below Sea Level Fall 2012
- Groundwater Below Sea Level Fall 2013
- Seawater Intrusion











Sources: Esri, DeLorme, NAVTEQ, TomTom, Intermap, increment P Corp., GEBCO, NRCAN, GeoBase, IGN, Kadaster NL, Ordnance Survey, Esri Japan, METI, Esri Swisstopo, and the GIS User Community

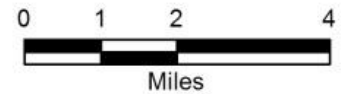




Water Supply Facilities & Seawater Intrusion

Explanation

-  Blend Wells
-  HSP Diversion
-  HSP Recharge Basin
-  Recycled Water Facility
-  CDS Alignment
-  Delivered Water Zone
-  PWVMA Boundary
-  Extent of SWI

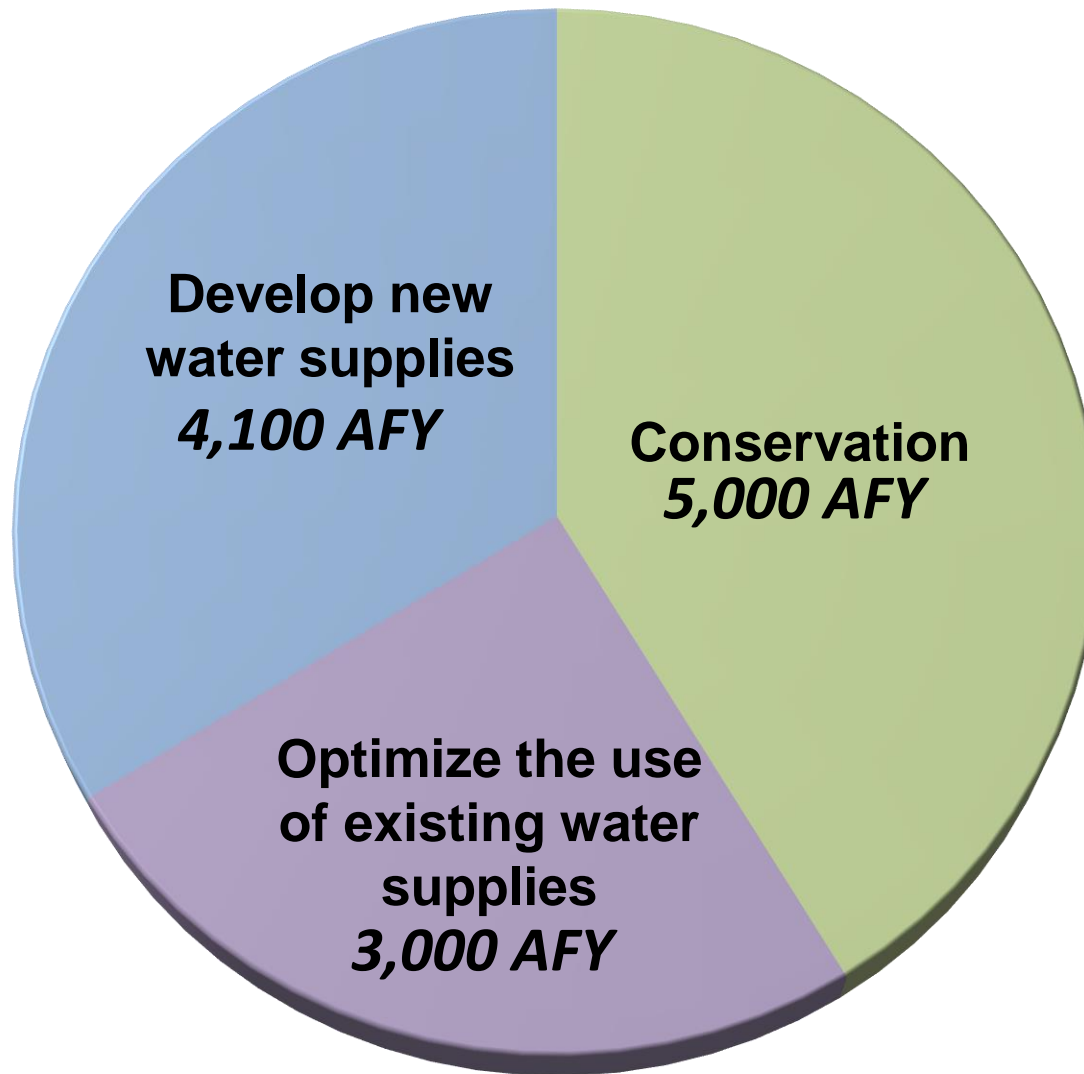


Existing Water Supply Facilities to Stop Overdraft & Seawater Intrusion

- **Harkins Slough Facility**
 - Managed Aquifer Recharge & Recovery
 - Stream flow diversion
 - 7,000 AF recharged since 2002
- **Recycled Water Facility**
 - 4,000 AFY irrigation season capacity
 - Drought tolerant supply
 - Reduces discharge of secondary effluent to marine sanctuary
- **Coastal Distribution System**
 - Over 20 miles of water conveyance pipeline
 - 25,000+ Acre-Feet Delivered

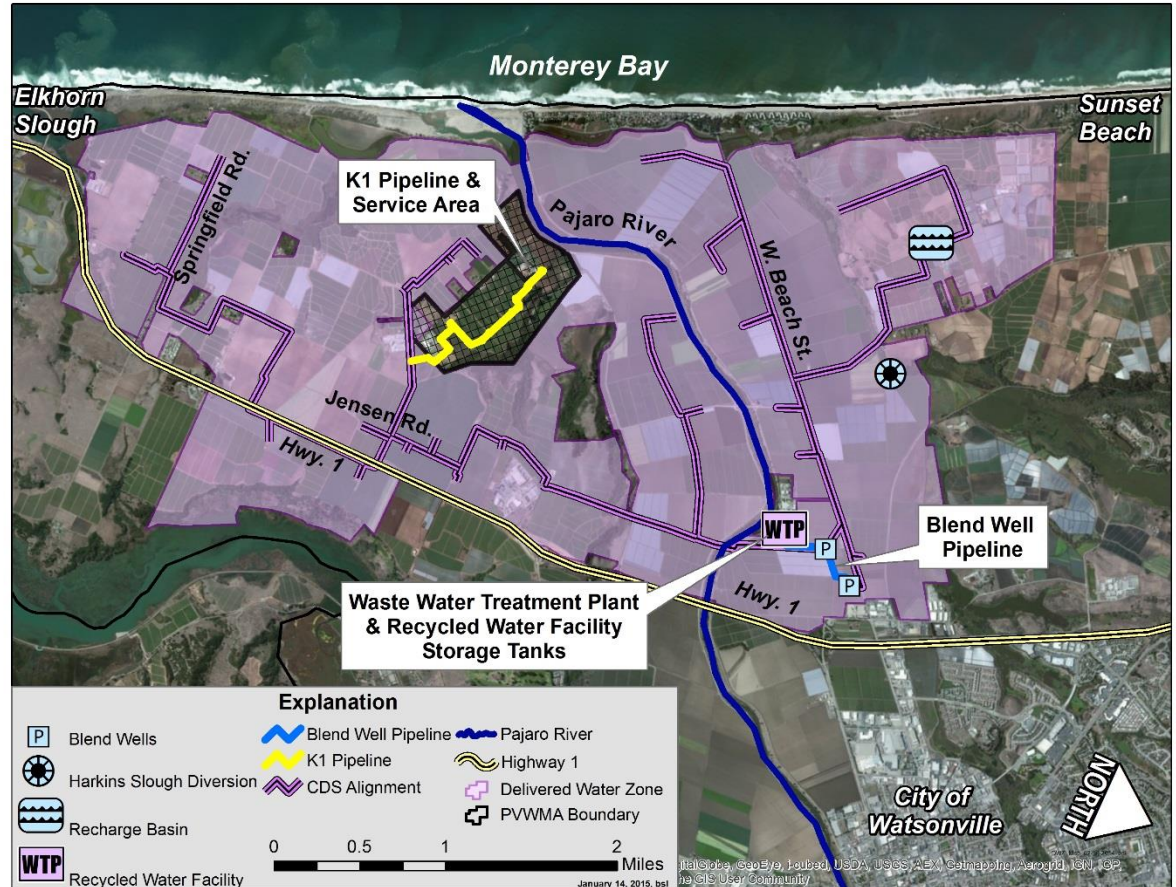


**Basin Management Plan Update
contains three primary components to achieve 12,100 ac-ft/yr**



“Early Out” Grant Funded Projects, and Distribution System Improvements

- Recycled Water Facility Improvements
- Distribution System Improvements
 - Blend Well Pipeline Project
 - K1 Pipeline Project
- New Monitoring Wells
- Conservation



Community Water Dialogue

Commitments

1. A commitment to protect the Pajaro Valley as an important agriculture resource
2. A recognition that the solution will not be an importation pipeline
3. A willingness to pursue diverse strategies which entail costs and sacrifices in order to bring our aquifer into balance

Community Water Dialogue Structure

- Community-driven
 - Community meetings attended by 50-60
- Action Teams advance priorities
 - Land Management and Irrigation Best Practices
 - Managed Aquifer Recharge
 - Big Projects
 - Communications
- Guidance Team provides leadership
- RCD as fiscal sponsor, staff and project administration

Dialogue



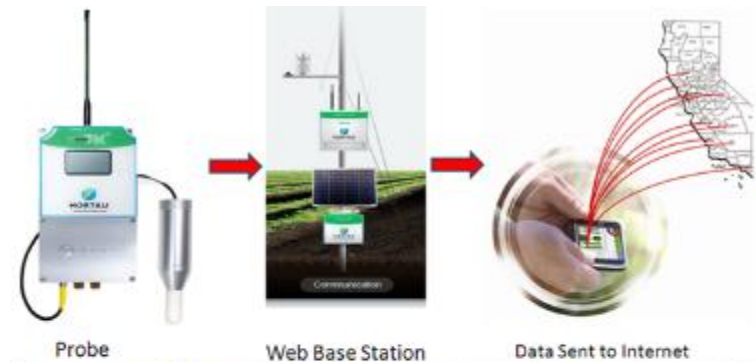
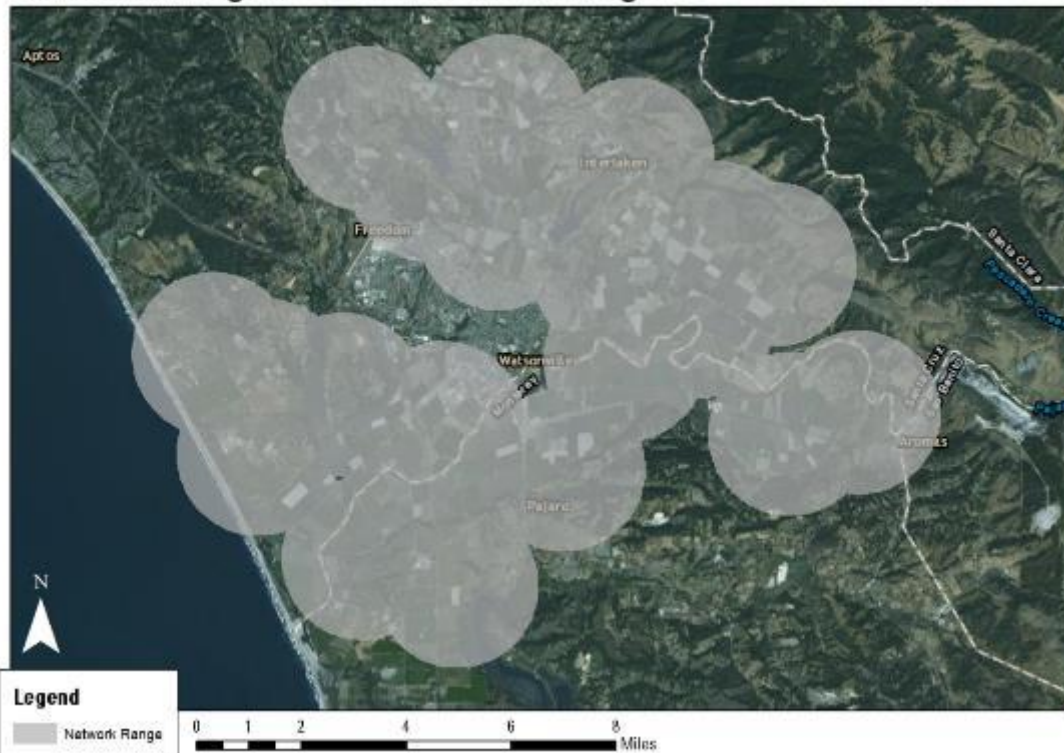
Dialogue to Action

to achieve the 5000 AF conservation target laid out in our Basin Management Plan and to bring the aquifer into balance

Wireless Irrigation Network (WIN)

Pajaro Valley Community Water Dialogue

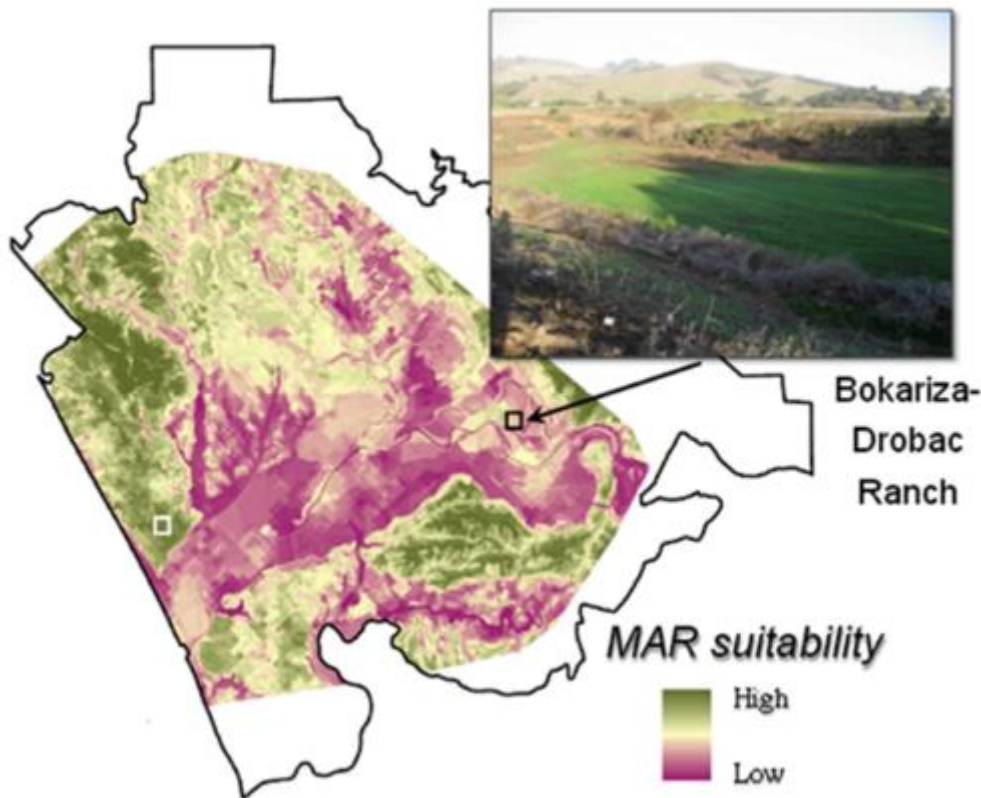
Wireless Irrigation Network Coverage



Dialogue to Action

to achieve the 5000 AF conservation target laid out in our Basin Management Plan and to bring the aquifer into balance

Managed Aquifer Recharge (MAR)



Dialogue to Action

to achieve the 5000 AF conservation target laid out in our Basin Management Plan and to bring the aquifer into balance

Technical Assistance: Irrigation and Nutrient Management



Additional Project Ideas

- Rotational fallowing/Cover cropping
- Market based incentives for Managed Aquifer Recharge
- Soil health management
- Community Commitment to Groundwater

CWD Lessons Learned



Questions?

Emily Paddock: Emily.Paddock@driscolls.com

Lisa Lurie: llurie@rcdsantacruz.org

Brian Lockwood: Lockwood@pvwater.org